

IPMA[®] SUSTAINABLE PROJECT MANAGEMENT CERTIFICATION

Giovanni Pisano

Head of IPMA Italy Certification Body

4 March 2026



IPMA® (International Project Management Association)

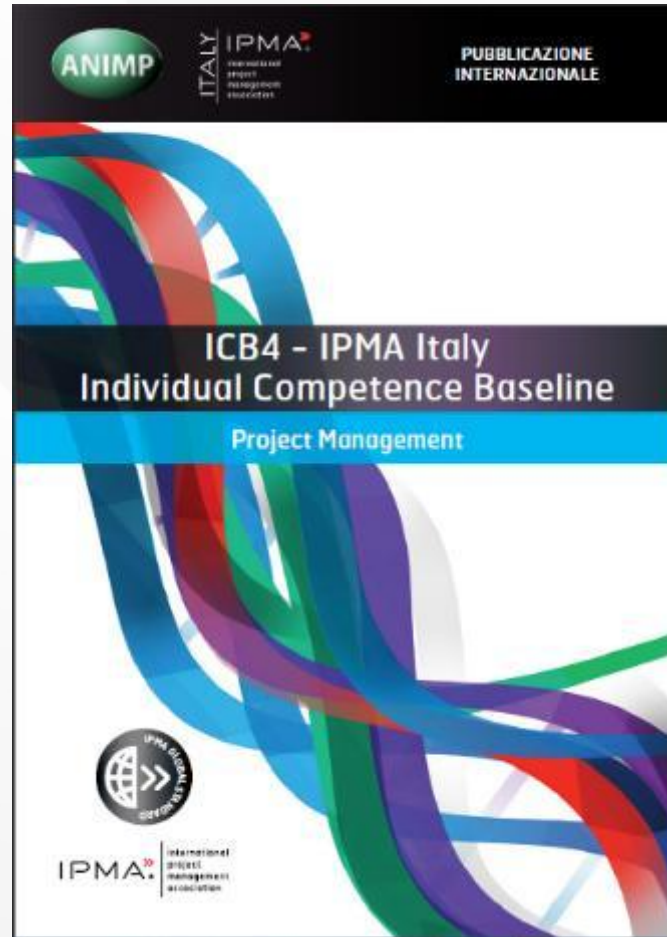
IPMA is the first world's Project Management association, founded in 1965.

MISSION

- Promote the culture of Project Management, disseminate standards and best practices;
- Recognize and certify the profession of Project Manager
- Collaborate with Associations, Universities and Business Schools.



IPMA model for Project Management: IPMA ICB4®



ICB4

- Framework developed by IPMA
- Global Standard
- Assessment Tool
- Three areas of Competence Elements

ICB4 Areas and Competence Elements

- **Practice area**

these are the specific methods, tools and techniques used in projects, programmes or portfolios to realise their success

- **People area**

these consist of the personal and interpersonal competences required to successfully participate in or lead a project, programme or portfolio

- **Perspective area**

under this heading come the methods, tools and techniques through which individuals interact with the context.

PRACTICE

Project Design
Requirements and objectives
Scope
Time
Organisation and information
Quality
Finance
Resources
Procurement and partnership
Planning and control
Risk and opportunities
Stakeholders
Change and transformation

PEOPLE

Self-reflection and self-management
Personal integrity and reliability
Personal communication
Relations and engagement
Leadership
Teamwork
Conflict and crisis
Resourcefulness
Negotiation
Result orientation

PERSPECTIVE

Strategy
Governance, structures and processes
Compliance, standards and regulations
Power and interest
Culture and values

Scheme of the Certification **Levels and Domains**

		Domains		
		Project Management	Programme Management	Portfolio Management
Level	IPMA® Level A	Certified Project Director	Certified Programme Director	Certified Portfolio Director
	IPMA® Level B	Certified Senior Project Manager	Certified Senior Programme Manager	Certified Senior Portfolio Manager
	IPMA® Level C	Certified Project Manager		
	IPMA® Level D	Certified Project Management Associate		

IPMA Sustainable Project Management Certification

It is an **add-on certification**, requires candidates to already hold a valid certification in Project, Program, or Portfolio Management (PPPM).

Certifying competence to lead projects that create value for people, planet, and prosperity.

» <https://ipma.world/ipma-certification/sustainable-pm/>

IPMA»





Based on the ICB4 Sustainable PM Reference Guide

A globally accepted competence standard

- » 28 Competence Elements across the three areas:
 - » Perspective
 - » People
 - » Practice
- » 92 Key Competence Indicators
- » Sustainability is integrated across all Competence Elements



Benefits for Individuals

- » International certificate
- » Global IPMA recognition
- » Differentiation in the job market
- » Alignment with ESG & SDGs
- » Career progression across levels
- » Professional credibility beyond “greenwashing”

Become a recognized sustainability leader

Benefits for Organizations

Certified professionals create sustainable value:

- » Better ESG-aligned projects
- » Reduced sustainability risks
- » Stronger stakeholder trust
- » Transfer of best practices
- » Talent attraction & retention
- » Value creation





Key areas of the IPMA Sustainable Project Management Certification

Key areas of assessment include:

The assessment focuses on the candidate's ability to integrate sustainability into project management practice in a structured and measurable way.

- » Applying sustainability concepts: Balance People, Planet and Profit in project decisions.
- » Addressing ESG risks and opportunities: Integrate Environmental, Social and Governance factors into planning and control.
- » Adopting a life-cycle perspective: assess sustainability impacts across the entire project life cycle.
- » Managing complexity and uncertainty: align projects with organizational and societal goals under evolving constraints.
- » Demonstrating leadership for sustainability: lead responsibly and drive sustainable value creation.



"Crucial" CEs

While all 28 CEs are important, nine are crucial because they directly guide the integration of sustainability across ESG dimensions:

1 Perspective competences

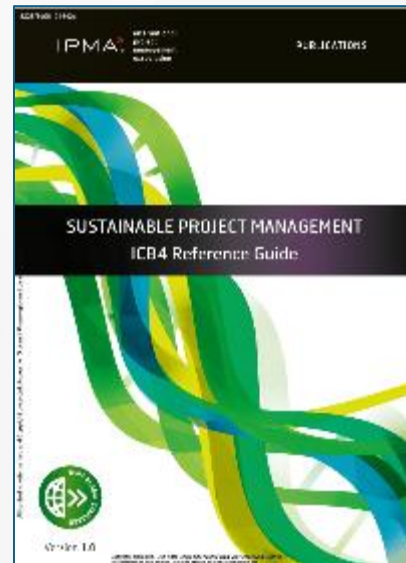
- 1.1 Strategy
- 1.2 Governance, structures and processes
- 1.3 Compliance, standards and regulations
- 1.4 Power and Interest
- 1.5 Culture and values

2 People competences

- 2.1 Self-reflection and self-management
- 2.2 Personal Integrity
- 2.3 Personal communication
- 2.4 Relationships and engagement
- 2.5 Leadership
- 2.6 Teamwork
- 2.7 Conflict and crisis
- 2.8 Resourcefulness
- 2.9 Negotiation
- 2.10 Result orientation

3 Practice competences

- 3.1 Project design
- 3.2 Requirements and objectives
- 3.3 Scope
- 3.4 Time
- 3.5 Organisation and Information
- 3.6 Quality
- 3.7 Finance
- 3.8 Resources
- 3.9 Procurement
- 3.10 Plan and control
- 3.11 Risk and opportunity
- 3.12 Stakeholders
- 3.13 Change and transformation



IPMA Qualifications in Sustainable Project Management



Same 4LC structure, focused on sustainability roles and competences.

- Based on the standard IPMA 4LC system.
- Level D through written examination.
- Levels C, B, A through project report and interview with two assessors.

Level	Role
A	Sustainability Certified Project Director (SCPD)
B	Sustainability Certified Senior Project Manager (SCSPM)
C	Sustainability Certified Project Manager (SCPM)
D	Sustainability Certified Project Associate (SCPA):



How to Get Certified

Simple and transparent process



Access to the IPMA Sustainable Project Management certification requires candidates to hold a valid certification in Project, Programme, or Portfolio Management.

For Level D, certifications granted by other recognized bodies (PMI, PRINCE2 and European Commission for PM²) are also accepted.

For Levels C, B and A, only a valid IPMA certification (in any domain) is accepted.

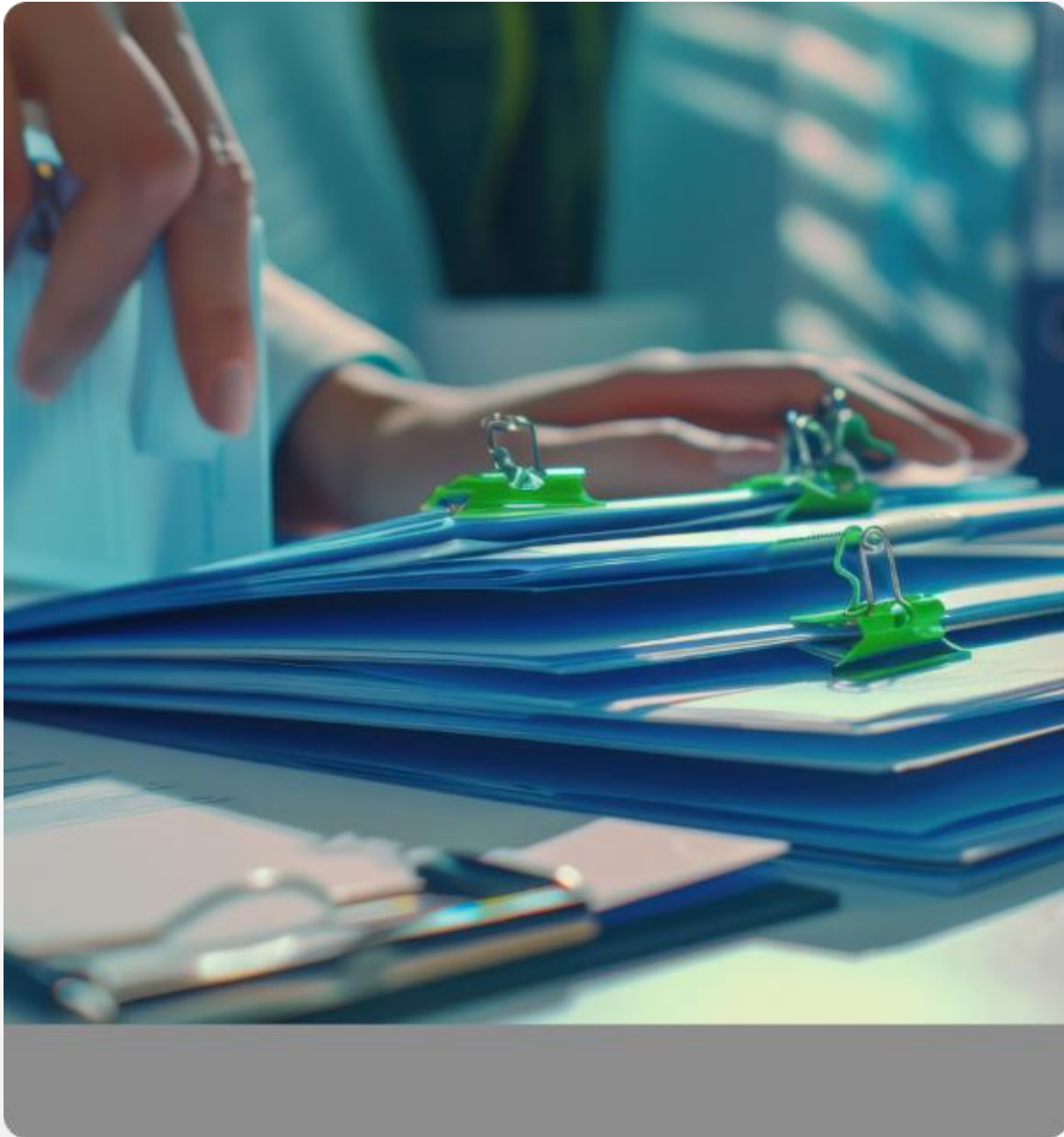
IPMA Complete Toolset for Sustainable Project Management



From competence to impact

Assessment Tests

Level	Exam	Report	Interview
D	<p>Written exam based on the IPMA ICB4 Reference Guide on Sustainable Project Management, with a mix of multiple choice and open questions on all the 28 CEs included in the Guide.</p> <p>Duration: 1.5 hr</p> <p>Structure:</p> <ul style="list-style-type: none"> • Multiple choice questions • Open ended questions (at least on the 9 mandatory CEs) 		
C-B-A		<p>Focused on ESG.</p> <p>Length: the report must be between 10 and 15 pages, plus any appendices, with a max. of 5 additional pages.</p> <p>CE coverage: must cover 7 out of 9 mandatory CEs</p>	<p>Focused on questions mainly related to the mandatory CEs (Strategy; Governance, structures and processes; Personal integrity; Leadership; Design; Requirements and Objectives; Scope; Procurement; Stakeholder)</p> <p>Duration: max. 1 hour</p>



Validity and Re-certification

Obtaining the certification

- » Demonstrate competence in at least **18** of the 28 CEs, **including** at least **7** of the 9 mandatory CEs defined in the ICB4 Sustainable Project Management Reference Guide.

Validity

- » The validity period of the IPMA Sustainable Project Management certification is **5 years**.
- » Its validity remains **unaffected** even if the Project Management certification used as an eligibility requirement expires during this period.

Renewing certification

- » Continuing Professional Development requirements: 175 hours over five years (35 hours per year).
- » Continued sustainability practice

Call to action

- Start your sustainability journey
- Upgrade your Project Management certification
- Contact your IPMA Certification Body

Thank you!

IPMA[®]

